



NEWS & NOTES

CHINESE HISTORICAL SOCIETY OF SOUTHERN CALIFORNIA

appreciation of our chinese american heritage • a non-profit organization • 1648 redcliff street • los angeles, ca. 90026

April 1984

WHE-ER-RE'S THE MAP??

No longer a figment of someone's imagination, or a castle-in-Spain kind of a dream, the MAP is HERE!! it has ARRIVED!! and it is BEAUTIFUL!! This, of course, is the Society's Los Angeles Chinatown Walking Tour Map which has been a year-long project, now a reality. A large rendition of the map was unveiled at the Spring Dinner (April 14), with California Secretary of State March Fong Eu snipping the ceremonial ribbon with a huge pair of scissors. Chuck Yee presented Mrs. Eu with the first copy, which will be placed in the State archives in Sacramento. Each dinner guest was also presented with a map, much to their delight and surprise.

On examining the map and its contents, there is no doubt that this was a labor of love and intense dedication by the following members:

Map Development Committee: George Yee, Chairperson, and his assistants Munson Kwok, Paul Louie, Bill Mason, Doreen Chan, Eugene Moy, Chuck Yee.

Map Fundraising Committee: Evelyn Cucchiarella, Chairperson, and her assistants Suellen Kwok, Munson Kwok, Eugene Moy, Ella Quan, Howard Quon, Susan Sing, Chuck Yee, George Yee, Mary Yee, Sue Yee.

Production & Marketing Committee: Chuck Yee, Chairperson, and his committee of one (1).

The Society extends grateful thanks to these faithful members for their selflessness in giving of their time and expertise in the production of this unique and extraordinary tour map.

Thanks are also extended for the monetary donations given by Chinatown businesses and organizations, as well as numerous individuals; and to Violet and William Quan (Sure-Pak, Inc.) who made and donated 6,000 plastic map protecters.

SPRING DINNER

Another milestone -- a successful Spring Dinner, Saturday, April 14 at the Hong Kong Low Restaurant -- was attended by 180 persons. Thanks to the efforts of the dinner committee, everyone seemed to enjoy the evening for several reasons:

- the dinner menu included a number of outstanding dishes.
- the guest speaker, Dr. Sucheng Chang, Professor in Political Science at U.C. Berkeley, presented a great number of unknown facts about "The Chinese in California Agriculture", which were gleaned through her years of researching old legal documents and property transactions.
- the exciting unveiling of the Society's self-guiding Walking Tour Map.
- the raffle drawing, always a "fun activity" for any audience.

For this memorable evening, the Society has many persons to thank:
Dinner Committee Chairperson Sue Yee, Evelyn Cucchiarella, Anita Jeung, William Jeung, Munson Kwok, Suellen Kwok, Tom Moy, Eugene Moy, Helen Morrison, Ella Quan, Gerald Shue, Susan Sing, Chuck Yee, Mary Yee.

Raffle prize donors: Dan Louie -- several cases of produce
East West Players -- 2 theatre tickets
Hong Kong Low -- "dim sum" luncheon for two
Phoenix Bakery -- 2 strawberry creams cakes
March Fong Eu -- luncheon for two in Sacramento

Florence and Gilbert Leong }
Gloria and Gerald Shue } gift items
Suellen and Munson Kwok }
Susan Sing and Eugene Moy -- silkscreen art
Tom Moy -- 2 football tickets
Sharon Hoy -- cookbook

The grand prize, an original painting by Tyrus Wong, CHSSC member and well-known artist, was won by Gunar Freibergs, Professor of History at San Fernando Valley State College. As the winning ticket was being drawn, Prof. Freibergs remarked that he would like to win that painting. And....he did!!!

YOU'VE COME A LONG WAY, LADIES!!

A photo exhibit - "Chinese Women in America, 1834-1982" - is being displayed at the John F. Kennedy Library at California State University, Los Angeles, and will be open to the public until June 13. CHSSC was one of the twelve co-sponsoring organizations that were represented in the standing-room-only audience. The opening night reception honored nine Chinese women for their outstanding contributions to the community and for pioneering achievements in their particular fields of endeavor:

Lily Lum Chan	Him Gin Quon
Lily Lee Chen	Annie Chin Siu
Louise Leung Larson	Dolores Wong
Lilly Mu Lee	Maye Wong
Bessie Sue Loo	

Presenting commendations were James M. Rosser, President of Cal State, and Grace M. Davis, Deputy Mayor, Los Angeles. Also on hand to congratulate the honorees was California Secretary of State March Fong Eu, who is also a pioneer in her own right, and along with innumerable other Chinese women, has indeed come a long, long way.

The exhibit, funded by the U. S. Department of Education, is a pictorial history with photographs, illustrations and artifacts tracing the lives, struggles and achievements of Chinese American women through the years.

VENTURA FIELD TRIP

The busload of Society members participating in the March 24 field trip to Ventura had a glimpse back into history on their first stop at the Albinger Archaeological Museum. In the area where the Museum now stands, archaeologists have uncovered evidence of Indians of an early culture dating back 3,500 years. For about 1,500 years, these inhabitants stayed in the area, which then remained vacant until the year 1500, when the Chumash Indians settled there. Through the years, other inhabitants included the Spaniards and, in 1905, the Chinese lived in the area, developing a small Chinatown of 14 dwellings and store buildings. Archaeological explorations authorized in 1974-75 by the City of Ventura uncovered a wealth of evidence concerning the

settlers here. These artifacts are on display in the Museum, and were described to the group by one of the Museum's docents. The tour also included a walk through a historic section of the town, a commentary on several classic Victorian houses, and a visit to the Olivas Adobe, built in the late 1840's to house the growing family of Teodora and Raimundo Olivas.

The Society extends thanks to the Albinger Museum for the warm welcome extended to the Society, and to members Roberta Greenwood and Evelyn Cucchiarella for their assistance in the planning of the tour.

WHO'S IN THE NEWS

--With the Olympic Games approaching closer by the week, the media has highlighted incidents in the lives of former champions, outstanding events of past years, and personal memories of the last time the Olympics were located in Los Angeles at the Coliseum in 1932. CHSSC member Henry Welcome, pioneer and current resident of Eagle Rock, was spotlighted recently in the El Sereno Star, neighborhood paper in the northeast section of Los Angeles. Henry's exciting moment at the 1932 Olympics was his glimpse of royalty. Says Henry, "The swim stadium was nearby, and I remember seeing the descendant of the royal family of Hawaii, Duke Kahanamoku, make a dive into the pool. He was very dark-skinned, but had all white hair. It was a very striking sight." Henry also attended track and field events at the Coliseum. "I was just a boy then, and my father was very interested in the marathon event. We saw Babe Didrickson in a race. Down in the Angelus Mesa area, it was the first time they built an Olympic Village for the athletes and trainers in Olympic history."

A BIG WARM WELCOME to new LIFE MEMBERS, Mary and Chuck Yee.

Deepest sympathy goes to Joe Yee for the sad loss of his wife Alice, who passed away unexpectedly on Mar. 29 due to a lingering illness.

GUM SAAN JOURNAL

To date, CHSSC has published ten volumes of the Gum Saan Journal. There are now available copies of all volumes. Anyone who is missing an issue, or needs extra copies, or new members who would like a complete set, please write or phone Margie Lew, 2346 No. Indiana Ave., Los Angeles, Ca. 90032, or phone 222-4375. There will also be copies available at the monthly meetings. The charge is \$.50 per copy, and \$4.50 for the complete set of 10. For mailing, add \$.20 per single, and \$.50 per set.



CHINESE HISTORICAL SOCIETY OF SOUTHERN CALIFORNIA

REGULAR MEETING

DATE: FIRST WEDNESDAY, MAY 2, 1984

TIME: 7:30 P.M.

PLACE: CASTELAR SCHOOL, Multipurpose Room

840 Yale Street

Los Angeles, CA, 90012

PARKING on school grounds. Enter on College
Street between Hill Street and Yale Street

AGENDA: MINUTES AND OFFICERS' REPORTS
BUSINESS

M.Yee/E.Quan/K.Dong

FIELD TRIP WRAPUP

Ev. Cucchiarella

SPRING DINNER WRAPUP

Sue Yee

MAP MARKETEERS

Chuck Yee

NEW BUSINESS

GREAT MOTHERLODE FALL FIELD TRIP

Johnny Yee

September 28,29,30

(Anyone at all interested please come for a
show of hands or phone Kwok, 828-6911.)

WALKING TOUR FOR LACC

EL PUEBLO PARK COMMITTEE

E.Moy/M.Kwok

ANNOUNCEMENTS

Asian/Pacific American Heritage Week

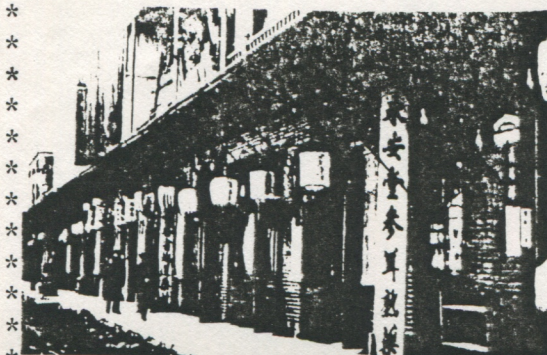
PROGRAM I: PRESENTING LOS ANGELES CHINATOWN WALKING TOUR MAP
Chuck Yee

PROGRAM II:

"HERBS PRODUCT AND HEALTH PROTECTION"

Francis Hong

President of Connex Enterprises



Wing On Tong, Old Chinatown

Mr. Hong will discuss the myth and how the public view Chinese herb. The Enterprise distributes Oriental herbs, mainly Chinese, for the entire United States and Canada. As a fourth generation owner of Wing On Tong, one of the oldest Chinese herb stores in Los Angeles, Mr. Hong has a great understanding of herbs and is going to show samples as he speaks.